

Your guide to creating  
safer, more efficient  
workplaces



## Who we are

At Clarity, we don't just provide safety solutions, we become a partner in your workplace safety journey. Our team of experts is dedicated to helping businesses like yours create safer, more efficient environments with industry-leading barriers, projectors, and workplace safety consulting.

Whether you need guidance on compliance, a full site transformation, or simply the best safety solutions for your facility, we're here to support you every step of the way.

## Meet your project team



**Damian**  
Managing Director



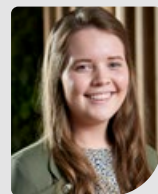
**Allana**  
Project Manager



**Caleb**  
Area Sales Manager



**Kate**  
Supply Chain and  
Project Assistant



**Alana**  
Sales and Marketing  
Executive



**Calvina**  
Sales Executive



**Neil**  
Head of Design



**Merryl**  
Sales and Business  
Development



**Jade**  
Supply Chain  
Coordinator and  
Finance Support



## What we do

At Clarity, we help businesses create safer working environments by reducing risk, enhancing safety, and improving operational efficiency.

From impact-resistant barriers that protect people and assets to LED-projected floor markings that provide highly visible guidance, our innovative solutions are designed to proactively prevent accidents and ensure workplace safety.





## Project Management

- > We understand that a successful project goes beyond just the physical transformation of your space – it requires meticulous planning, seamless coordination, and expert project management. That's why, with Clarity we take pride in offering our comprehensive methodology, to ensure that every turnkey project has a smooth and efficient journey.







Clarity Project Management delivers your safe visual site without the stress!



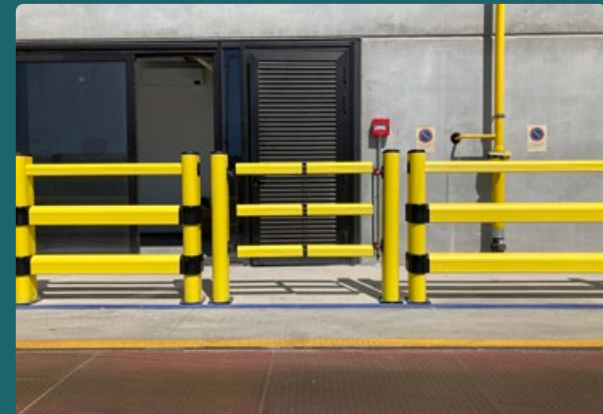




## Visual Safety Protection Barriers

Clarity Visual Safety Barriers provide protection for people, assets and equipment to create safe and visual conditions in the workplace.

Forklift truck traffic in retail distribution centres presents a problem for racking and equipment that gets easily damaged. We offer a variety of Kerb and Wall protections that are brilliant for retail environments.



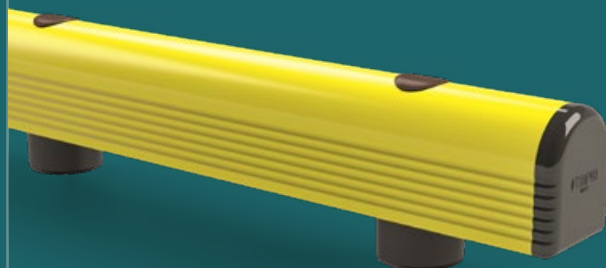




- ✓ V0 FIRE RATING
- ✓ MODULAR CONSTRUCTION
- ✓ SLIM PROFILES
- ✓ SCRATCH RESISTANT



## Visual Safety Protection Barriers



People, machinery, and assets are the main areas that suffer damage from moving vehicle impacts. Our walkway and pedestrian barriers offer a comprehensive solution to safeguard your workspace and personnel from potential hazards.

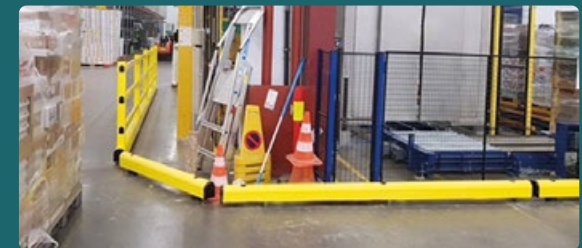




Product	Model	Rail Length	Load Type	Ultimate Load (Joules) For impact angle degrees below					
				10	15	30	45	60	90
SM		1500		34,887.94	15,704.47	4,208.00	2,104.00	1,402.67	1,052.00
LM	MOD	2000		135,970.00	61,205.63	16,400.00	8,200.00	5,466.67	4,100.00
	RE	2000		309,414.87	139,280.14	37,320.00	18,660.00	12,440.00	9,330.00
LINK	LM	2000		577,043.81	259,750.74	69,600.00	34,800.00	23,200.00	17,400.00
	150/1	2000		489,426.01	220,310.42	59,032.00	29,516.00	19,677.33	14,758.00
	150/2	2000		677,495.86	304,968.26	81,716.00	40,858.00	27,238.67	20,429.00
	150/3	2000		865,565.72	389,626.10	104,400.00	52,200.00	34,800.00	26,100.00
HAND RAIL		90		54,719.67	24,631.54	6,600.00	3,300.00	2,200.00	1,650.00
PED		90		99,490.31	44,781.61	12,000.00	6,000.00	4,000.00	3,000.00
	90 LINK	2000		165,817.00	74,641.00	20,000.00	10,000.00	6,667.00	5,000.00
	150	2000		301,356.16	135,652.58	36,348.00	18,174.00	12,116.00	9,087.00
	150 LINK	2000		589,878.06	265,527.95	71,148.00	35,574.00	23,716.00	17,787.00
PIN	PED 150	2500		557,145.80	250,793.80	67,200.00	33,600.00	22,400.00	16,800.00
	PED 200	2000		557,145.80	250,793.80	67,200.00	33,600.00	22,400.00	16,800.00

Product	Model	Rail Length	Load Type	Ultimate Load (Joules) For impact angle degrees below					
				10	15	30	45	60	90
BFLEX	FRONT/1	2000		135,970.09	61,205.63	16,400.00	8,200.00	5,466.67	4,100.00
	FRONT/2	2000		271,940.19	122,411.27	32,800.00	16,400.00	10,933.33	8,200.00
	COM/1	2000		143,697.17	64,683.90	17,332.00	8,666.00	5,777.33	4,333.00
	COM/2	2000		287,394.35	129,367.81	34,664.00	17,332.00	11,554.67	8,666.00
TOWER		-		301,356.16	135,652.58	36,348.00	18,174.00	12,116.00	9,087.00
TOWER LINK	TOWER LINK/1	2000		489,426.01	220,310.42	59,032.00	29,516.00	19,677.33	14,758.00
	TOWER LINK/2	2000		677,495.86	304,968.26	81,716.00	40,858.00	27,238.67	20,429.00
	TOWER LINK/3	2000		865,565.72	389,626.10	104,400.00	52,200.00	34,800.00	26,100.00
GRD	90	-		-	-	-	-	-	1,600.00
	150	-		-	-	-	-	-	4,100.00
	200	-		-	-	-	-	-	9,365.00
COPRO	90	-		79,592.25	35,827.69	9,600.00	4,800.00	3,200.00	2,400.00
	150	-		193,177.02	86,956.78	23,300.00	11,650.00	7,766.67	5,825.00
DOCK GATE		-		248,360.98	111,797.31	29,956.00	14,978.00	9,985.33	7,489.00
TRUCK LINE		-		193,177.02	86,956.78	23,300.00	11,650.00	7,766.67	5,825.00

- ✓ V0 FIRE RATING
- ✓ MODULAR CONSTRUCTION
- ✓ SUITABLE FOR INTERNAL AND EXTERNAL USE
- ✓ DIRT PICKUP RESISTANT
- ✓ WIPE CLEAN
- ✓ NON-FADING
- ✓ SLIM PROFILES
- ✓ SCRATCH-RESISTANT



# Enhancing Workplace Safety with Safeway Gates and Shuttle Sensors

## Safeway Gates

### Intelligent Pedestrian Crossing Control

Navigating busy industrial environments can be hazardous, especially at crossing points where pedestrians and vehicles intersect. The SafeWay system ensures safe passage by detecting oncoming vehicles and distinguishing them from pedestrians. If a vehicle is approaching, SafeWay automatically stops pedestrian movement, only allowing them to cross once the danger has passed. This intelligent solution reduces accident risks, enhances workplace safety, and promotes a seamless flow of movement in high-traffic areas.





## Shuttle Sensors

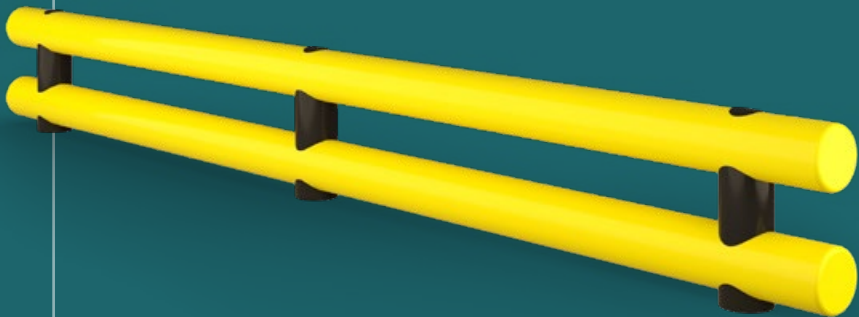
### Advanced Collision Prevention

Collisions around blind corners and high-traffic zones pose a significant risk in industrial facilities. The Shuttle sensor system provides real-time audio and visual warnings, alerting both drivers and pedestrians of potential hazards.

Capable of detecting all types of moving objects - large or small - Shuttle sensors send alerts to enhance situational awareness, helping to prevent accidents before they happen.

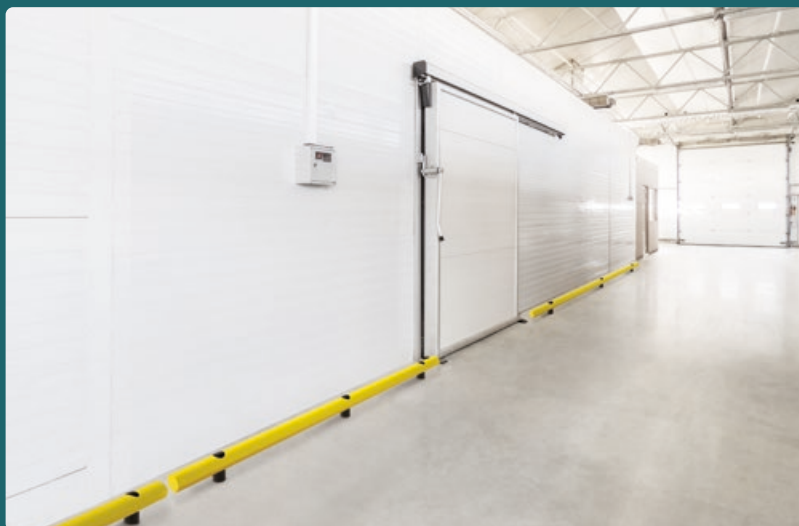
By integrating SafeWay gates and Shuttle sensors, businesses can proactively reduce workplace incidents and improve overall safety for employees and visitors.





## Cold Range Barrier Products

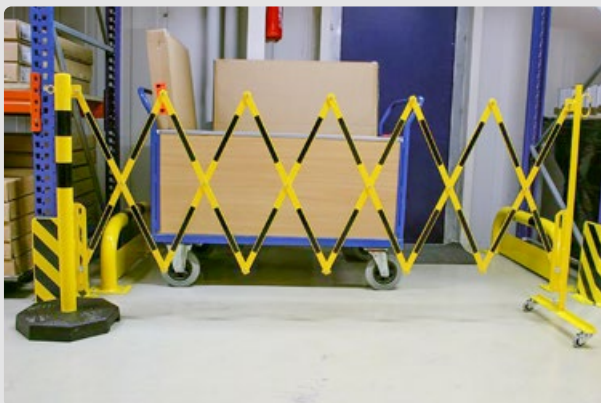
In environments with negative temperatures, such as food preservation warehouses, our cold line barrier range offer protection, where other barriers may not.





## Pull Out / Tensa Barriers

Some areas in the factory need to be cordoned off, but a permanent barrier cannot be installed due to frequent use of that area. Tensa or Tensile barriers offer a semi-permanent solution for pedestrian segregation and are very versatile.



# Are your safety barriers meeting the highest standards?



## PAS 13 Compliance: Meeting and Exceeding Industry Expectations

At Clarity, all our barriers are PAS 13 compliant, ensuring they meet the industry's widely recognised guidelines for workplace safety. While PAS 13 provides a structured framework for the installation and performance of flexible polymer barriers, it is not an official safety standard but rather a code of best practice created by industry competitors.

Despite this, PAS 13-compliant barriers remain among the most reliable safety solutions available, providing essential protection for pedestrian and vehicle segregation, impact absorption, and operational safety.

Our commitment to safety means that we don't just comply with PAS 13, we go beyond it. While this framework sets an effective baseline, we continuously seek to enhance our barriers' strength, durability, and performance, ensuring they exceed the expected safety levels for industrial environments.



## Moving Towards UNI/TR 11886: Setting a New Standard for Workplace Safety

While PAS 13 serves as a useful guideline, the UNI/TR 11886 specification represents the next evolution in workplace safety standards. Unlike PAS 13, UNI/TR 11886 is a fully recognised European technical specification developed through years of research, testing, and collaboration between leading safety experts, including MPM. It provides a rigorous, scientifically validated framework for the design, impact resistance, and effectiveness of safety barriers, ensuring absolute protection in real-world industrial settings.

At Clarity, our mission is to help establish UNI/TR 11886 as the recognised benchmark for workplace safety. By conducting over 200 crash tests per month, validating our barriers with independent certification bodies, and continuously refining our technology, we ensure that our solutions are designed for maximum durability and risk reduction. This forward-thinking approach means our barriers not only meet today's expectations but are setting the standard for the future of workplace safety.

By choosing Clarity, you're investing in more than just compliance. You're securing a future-proof safety solution that aligns with the highest level of safety performance available.

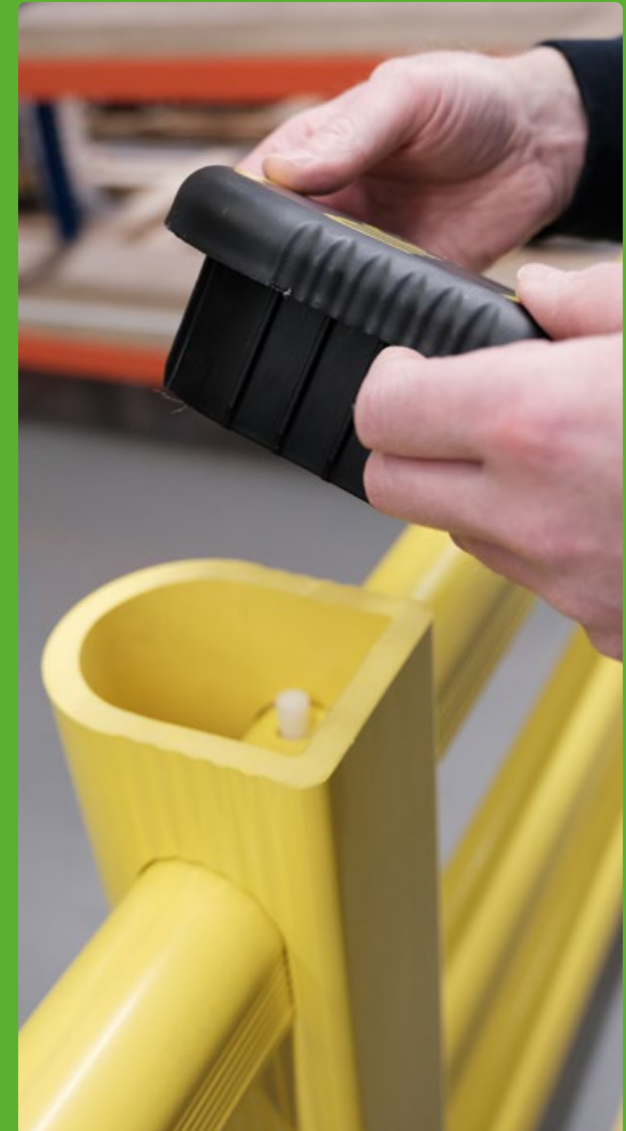




# Can I install Clarity products myself?

**Yes!** Our products are designed to be easy to install, giving you the flexibility to set them up without the need for professional installation. While we do offer an installation service for those who prefer a hands-off approach, we believe in providing solutions that are straightforward, hassle-free, and ready to go.

We supply everything you need for a successful installation, including clear instructions, step-by-step "how-to" guides, and extra support if needed. Whether you're installing polymer safety barriers, LED projected floor markings, or other workplace safety solutions, you can be confident that the process is simple and efficient.



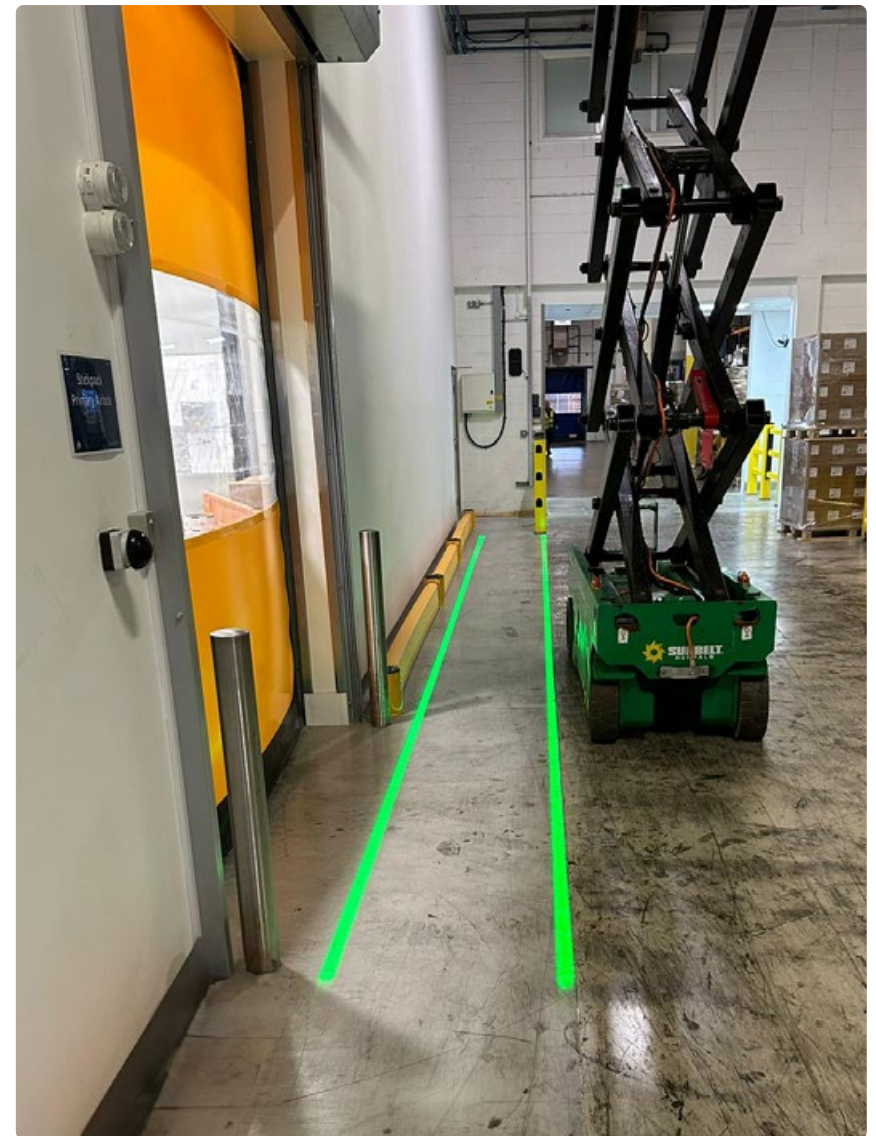
## Projected Floor Markings

Our projectors and lasers can be supplied with Microwave sensors to activate the projectors if an FLT or pedestrian is detected.

Freezer range of laser projectors also available.











## Line Projectors

In factories with low floor-to-ceiling (F2C) height, traditional safety signage and floor markings can often be obstructed or difficult to see. Line projectors offer a highly visible, maintenance-free alternative, ensuring clear safety guidance without the limitations of physical markings.

Our line projectors create crisp, illuminated lines on the floor, making them ideal for defining pedestrian walkways, vehicle lanes, loading zones, and hazardous areas in tight spaces. Unlike floor tape or paint, these projections never fade, wear out, or become obscured by dirt and debris.

With quick and simple installation, energy-efficient operation, and high visibility even in challenging environments, our line projectors provide a long-term safety solution for factories looking to enhance workplace safety without the hassle of continuous maintenance.

CAN INTERACT  
WITH FLTS AND  
PEDESTRIANS

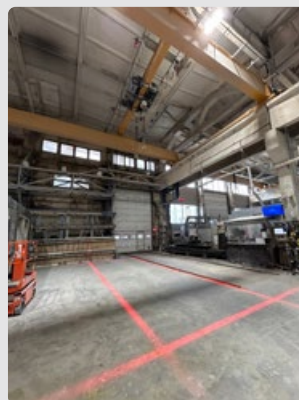




## Crane Projectors

Unlike line projectors that define walkways and hazard zones on the ground, crane projectors focus on overhead safety, projecting clear visual indicators of a crane's movement path to prevent accidents in lifting zones.

Crane projectors provide a bright, always-visible safety boundary, helping workers identify hazardous areas where heavy loads are in motion. By creating dynamic, illuminated safety zones, they improve awareness and reduce the risk of collisions.





## Progtech

We provide Progtech safety lighting solutions for LED projected floor markings, offering high-definition, long-lasting safety signage that enhances workplace visibility and risk prevention.

Engineered for durability and precision, Progtech projectors come with a 5-year warranty, ensuring reliability and cost-effectiveness for industrial safety applications.



## GOBO

Here are just a few examples of what can be projected:

GOBO stands for "Goes Before Optics," referring to a stencil or template placed in front of a light source to project shapes, patterns, or images onto a surface.

A glass GOBO allows for intricate, high-resolution designs with multiple colours and fine details, making it ideal for complex logos and graphics.

In contrast, a metal GOBO is more durable and cost-effective but limited to simple, stencil-like patterns due to the need for structural support within the design.



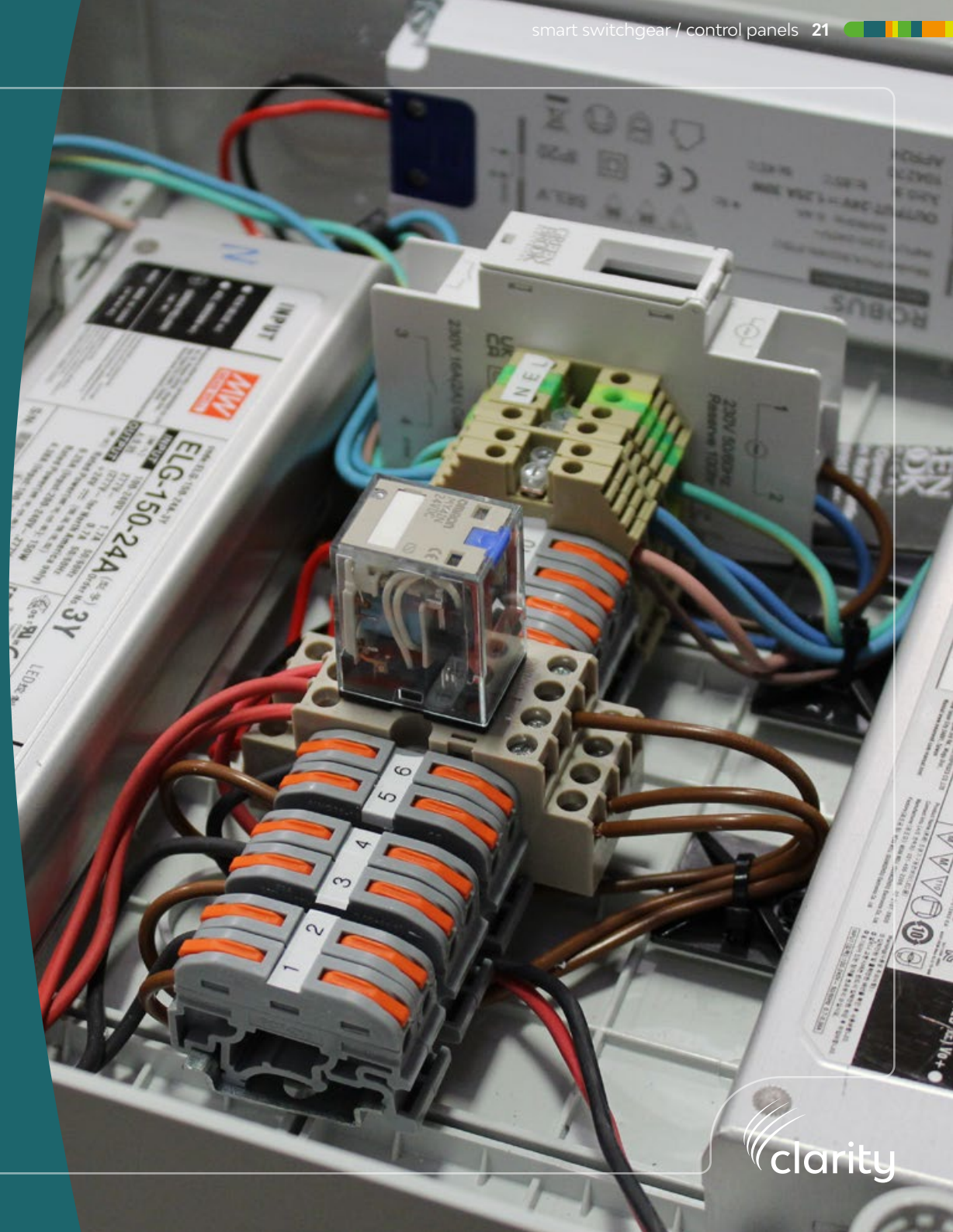


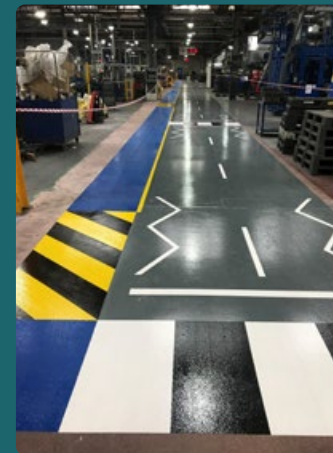
## Switchgear and Control Panels



Our switch gear technology ensures that safety systems only activate when needed, providing efficient, responsive hazard protection in warehouses and factories. Unlike traditional static solutions that operate continuously, our interactive systems use sensors, transformers, and control panels to detect movement and adjust in real time.

By activating safety projections, alerts, or lighting only when necessary, our switch gear reduces energy consumption, extends product lifespan, and ensures that safety warnings are always visible when they matter most – with adaptable configurations and seamless integration, you too can create a smarter, safer workplace.





## Floor Markings and Coatings

Strategic Floor Marking creates order and patterns of work in your facility, which eliminates time wasted in searching within a work area.

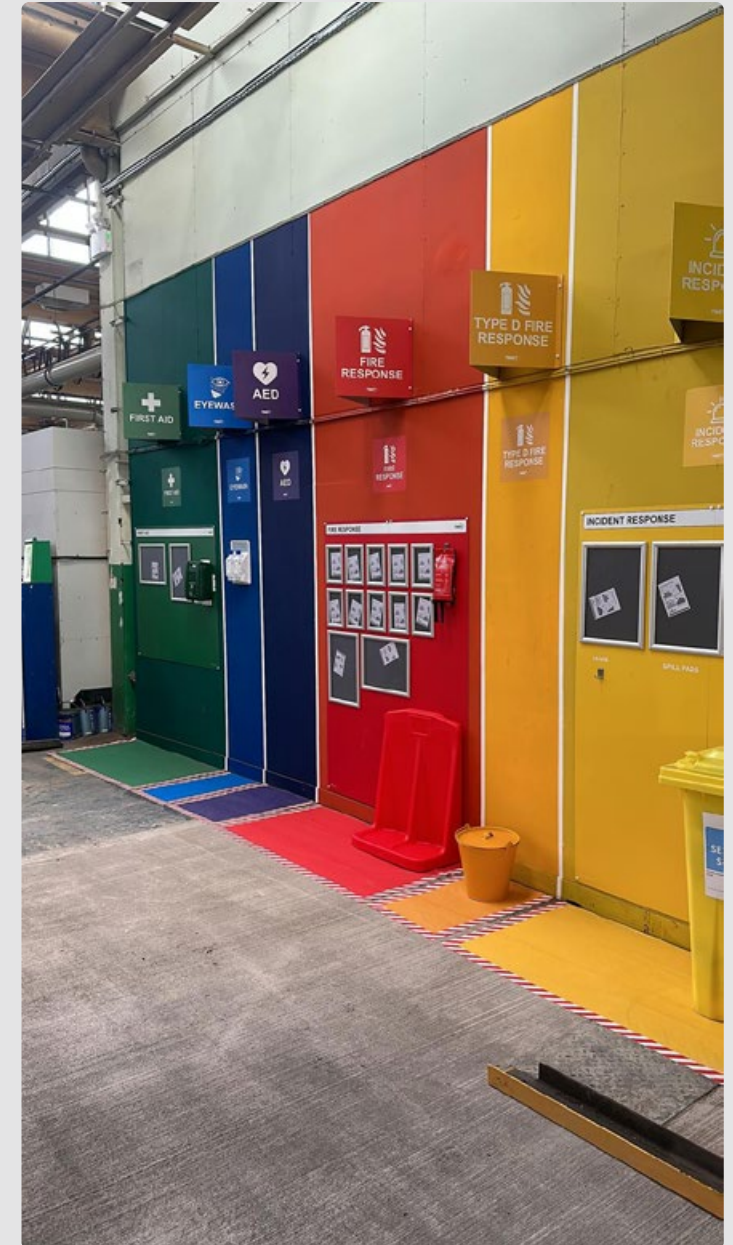




## Mightyline Floor Tapes

The mightyline floor tapes, floor signs, and floor markings are made to hold up to the rigors of warehouse activity, and also have a patented design. In addition to the high durability of these products, they are easy to install and have minimal residue on removal. Mightyline tapes are also 7 times thicker than the average floor tape and have beveled edges to ensure MHE traffic does not rip up the tape.

Freezer range of tapes also available for use down to -25 degrees C.

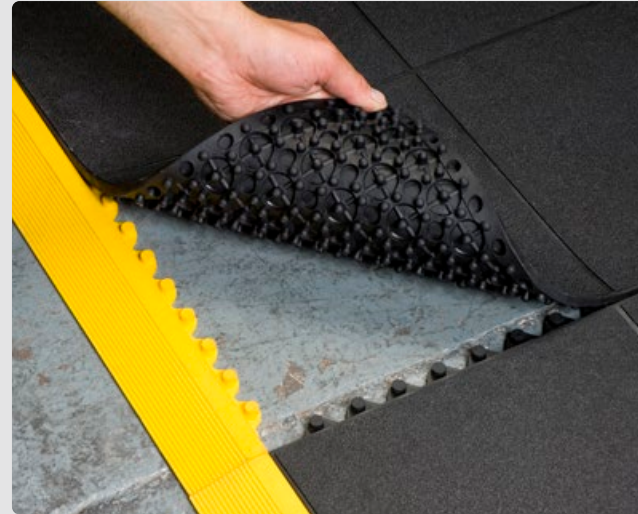


## Health & Safety Walls

Clarity's Health & Safety walls serve their purpose as a beacon within your factory. The vibrant colours are designed so employees are able to quickly locate the correct items in an emergency response. These walls also act as a constant reminder to employees of the importance of their well-being and encourages employees to adhere to safety measures.







## Floor Matting

- > Interlocking tiles to form any length or width area
- > Extremely hardwearing
- > Anti-fatigue properties for workers that stand for long periods of time
- > Made from fully recyclable material
- > Can be cleaned with a pressure washer
- > Helps to improve worker comfort, safety and satisfaction



## Custom Workshop Furniture

Custom Workshop furniture creates a clean working environment, fully adapted to your needs. This helps to increase worker satisfaction.





## Custom Workbenches

We can provide a variety of different workbench materials and RAL colours ensuring brand consistency, and can tailor each workbench to your specific requirements for working.



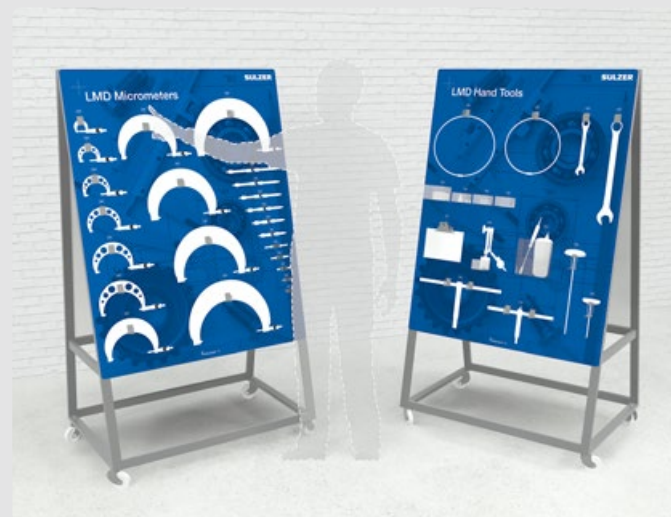
## Electronic Visual Management

Bespoke electronic signage created to your requirements

- > Remote reset function
- > Customisable LED message







## Visual Management

At Clarity, we offer a range of visual management solutions to help businesses monitor and track daily operations while reinforcing workplace safety. By integrating clear signage, performance tracking tools, and structured communication boards, we support businesses in creating safe and visual workspaces that enhance efficiency, compliance, and continuous improvement.

## Our Shared vision

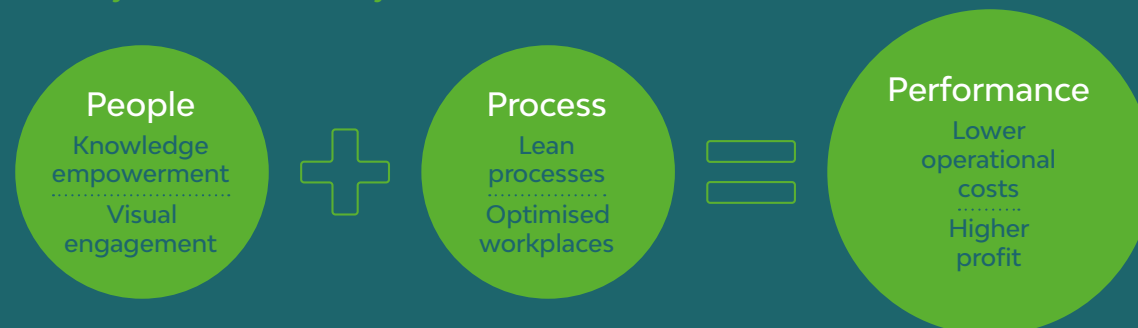
### Our Vision

To be a globally recognised leader in creating visual and safe environments, creating sustainable success for every enterprise and individual we touch.

### Our Mission

To create visual workplaces and sharp processes, making them safe, efficient and engaging.

### Clarity's formula for your Success:



## Sustainability

Sustainability is at the heart of responsible safety. By reducing waste, sourcing durable materials, and improving efficiency, businesses can protect both people and the planet.

Responsible supply chains use high-quality, ethically sourced materials built to last.

Sustainable operations focus on reducing waste, smarter energy use, and continuous improvement.

Expert guidance provides practical solutions to cut costs and enhance sustainability.

Guiding the way, protecting what matters - for a safer, greener future.



## Who we work with

## What our clients say

The quality of the work they send... and the passion that they all share is second to none.

*Mark Rosser*  
Production Manager at E&R Group

We get a first class product and a first class service.

*Steve Underhill*  
Operations Manager at Jotun Paints

The quality of the product far exceeds the traditional metal fabricated barriers. There's no maintenance, they can just be cleaned, and the risk of there being permanent damage is really low. It's just a no-brainer!

*Richard Chambers*  
Operational Excellence Leader at BW Integrated Systems

#ClaritySafety  
#GuidingTheWay  
#ProtectingWhatMatters



Manchester Office



Hull Office



### Clarity

Melton House  
Jackson Way  
Melton  
East Yorkshire  
HU14 3HJ

T 01482 296451

W [www.clarity-safety.com](http://www.clarity-safety.com)

E [info@clarity-safety.com](mailto:info@clarity-safety.com)

X [@claritysafety](https://twitter.com/claritysafety)

in [Clarity](https://www.linkedin.com/company/clarity)

